

**KB4-CON**

# Leveraging KnowBe4 to Enhance a Company's Security Culture

Erich Kron, Security Awareness Advocate

Jon Ball, Channel Account Manager

KnowBe4

KnowBe4



**Erich Kron**

Security Awareness Advocate

## About Erich Kron

- CISSP, CISSP-ISSAP, MCITP, ITIL v3, etc...
- Former Security Manager for the US Army 2nd Regional Cyber Center – Western Hemisphere
- Former Director of Member Relations and Services for (ISC)<sup>2</sup>
- A veteran of IT and Security since the mid 1990's in manufacturing, healthcare and DoD environments



ISSAP Architecture

**Microsoft**  
**CERTIFIED**  
*IT Professional*



**Jon Ball**  
Channel Account Manager

## About Jon Ball

- 8 years channel & partner enablement experience
- Former US Microsoft Cloud lead at major distributor
- Top performer at KnowBe4
- Proven track record in developing and scaling successful practices
- Focus on educating organizations about challenges and malicious threats and giving them the tools to combat them!

# Agenda

- Why do your customers need New School Security Awareness training?
- What are the challenges?
- How do you integrate SAT offerings with your other offerings?
- Expanding your security business

# Agenda

- Why do your customers need New School Security Awareness training?
- What are the challenges?
- How do you integrate SAT offerings with your other offerings?
- Expanding your security business

## Users Are The Last Line Of Defense

A staggering

# 91%

of successful data breaches started with a spear phishing attack

- **91%** of successful data breaches started with a spear phishing attack
- **W-2 Scams** social engineer Accounting/HR to send tax forms to the bad guys

# \$133K

## The Costs of Breaches and Ransomware Attacks

- The **average cost** of a ransomware attack on businesses was **\$133,000**
- **75%** of companies infected with ransomware were running **up-to-date** endpoint protection
- **34%** of businesses hit with malware took a **week or more** to regain access to their data.

CEO Fraud and BEC Caused

**\$12.5B**

In Identified Global Losses

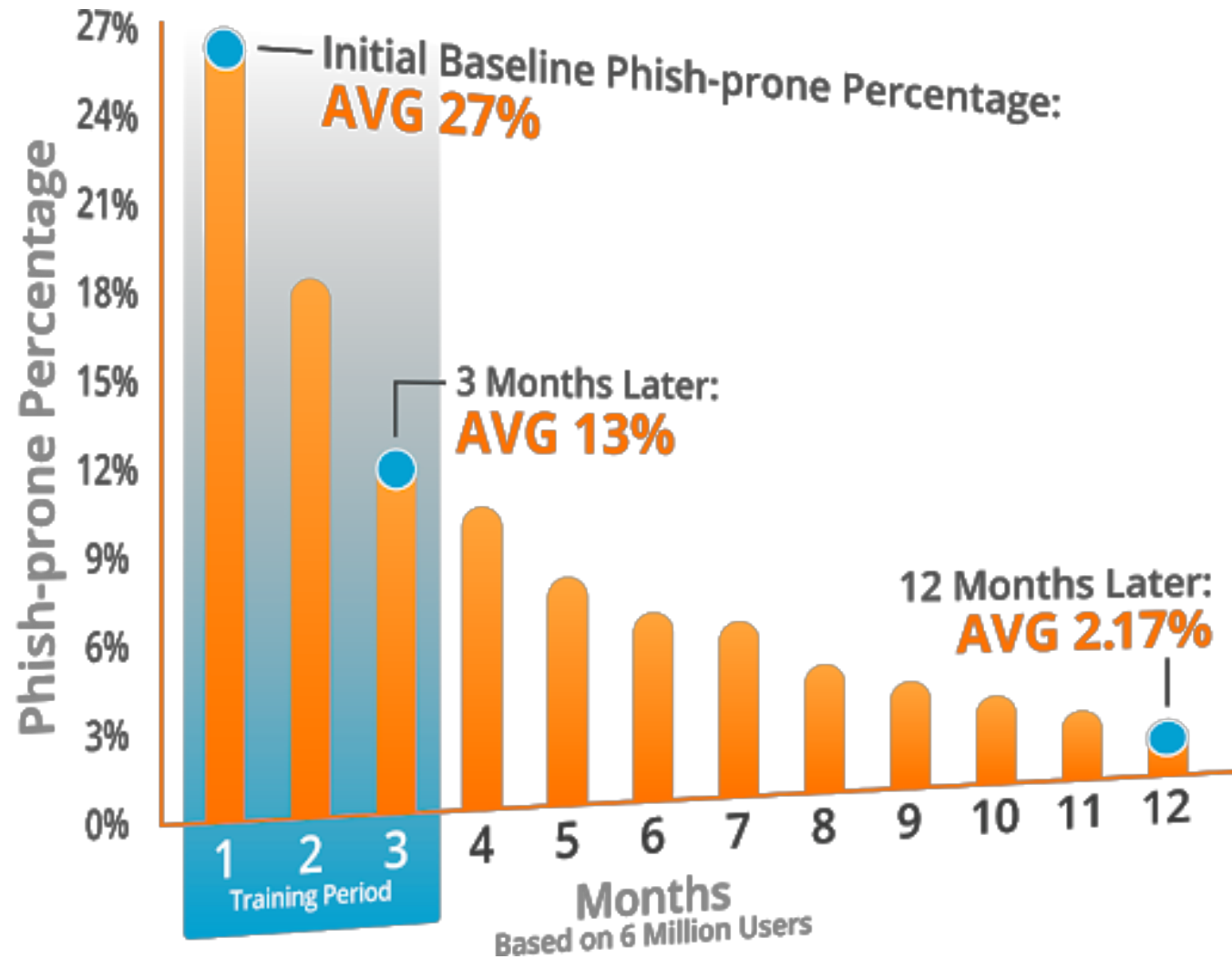
## BEC Attacks Are Growing

- **Business Email Compromise (BEC)** had a 136% increase in identified global exposed losses between Dec. 2016 and May 2018
- These attacks often contain **no links, no attachments** and no spelling or grammar errors.



## Does the Training Work?

Security awareness, coupled with frequent simulated phishing training, will help employees make smarter security decisions, everyday



# Agenda

- Why do your customers need New School Security Awareness training?
- What are the challenges?
- How do you integrate SAT offerings with your other offerings?
- Expanding your security business

# Challenges

- Organizations are spending a huge amount of money on technical "solutions" and the staffing to run them, and still losing the battle
- Technical people, such as the IT staff often severely underestimate how successfully users can be trained to stop the attacks
- Executives are often not provided the right amount and type of information to make an informed decision, especially if highly technical staff is trying to explain a human problem

# Agenda

- Why do your customers need New School Security Awareness training?
- What are the challenges?
- How do you integrate SAT offerings with your other offerings?
- Expanding your security business

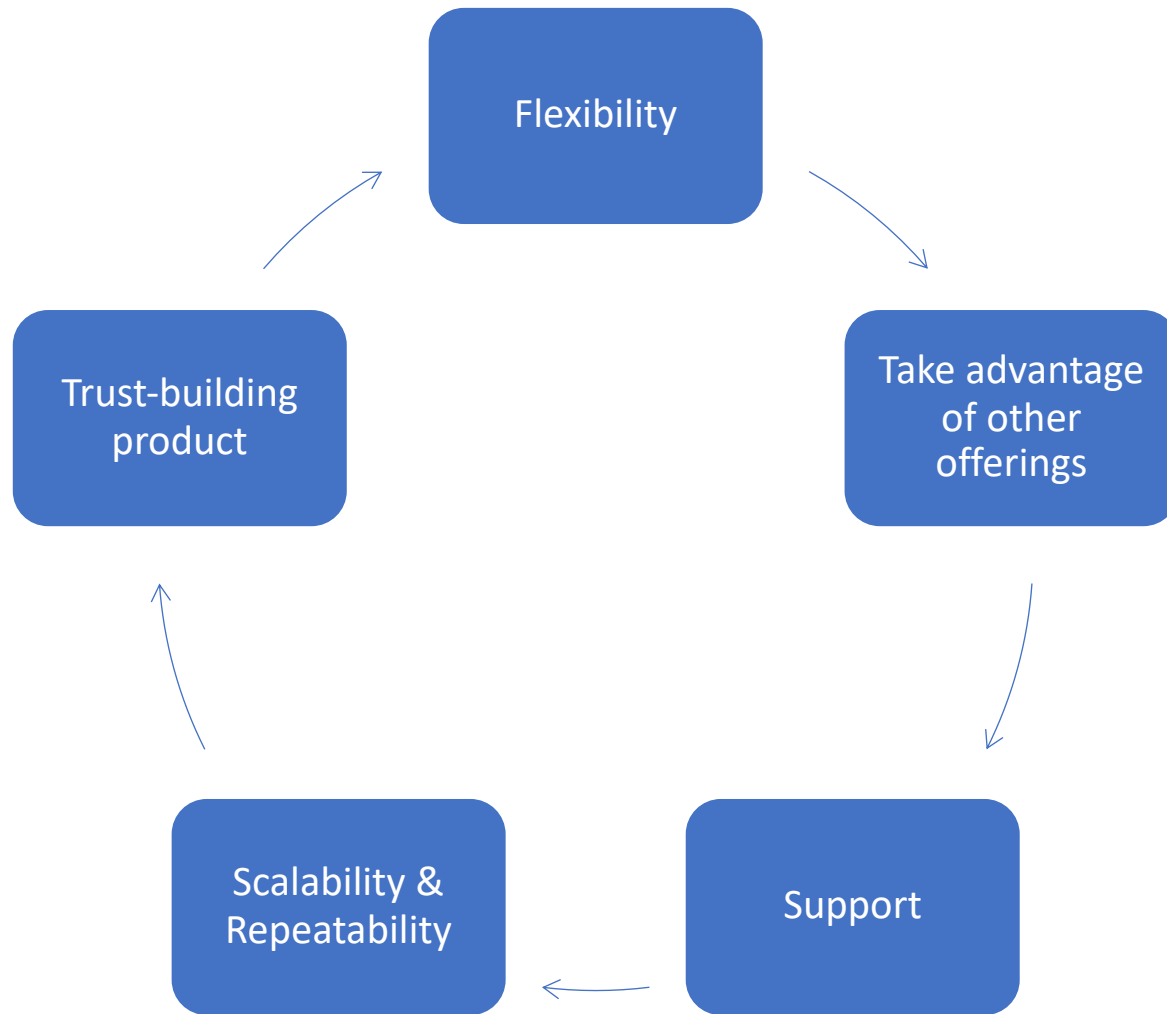
# Integrating Security Awareness Training With Other Offerings

- Security, when done correctly, is a layered approach consisting of technical and non-technical controls
- New School Security Awareness Training compliments other controls and is one of the few that helps build a strong organizational security culture
- Having users report phishing attacks, and even integrating with a SIEM, can be a great source of actionable threat intelligence

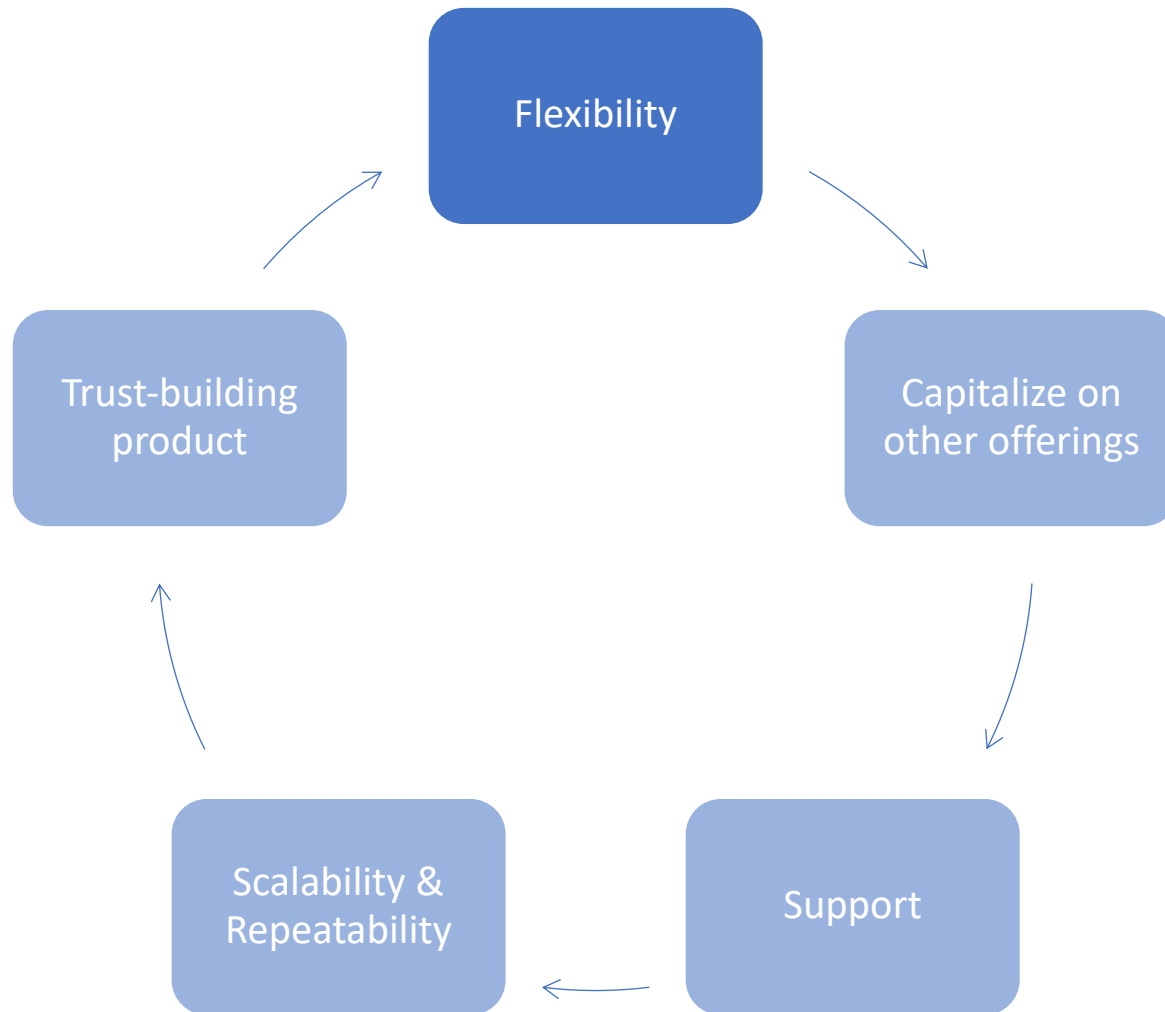
# Agenda

- Why do your customers need New School Security Awareness training?
- What are the challenges?
- How do you integrate SAT offerings with your other offerings?
- **Expanding your security business**

# Expanding Your Security Business



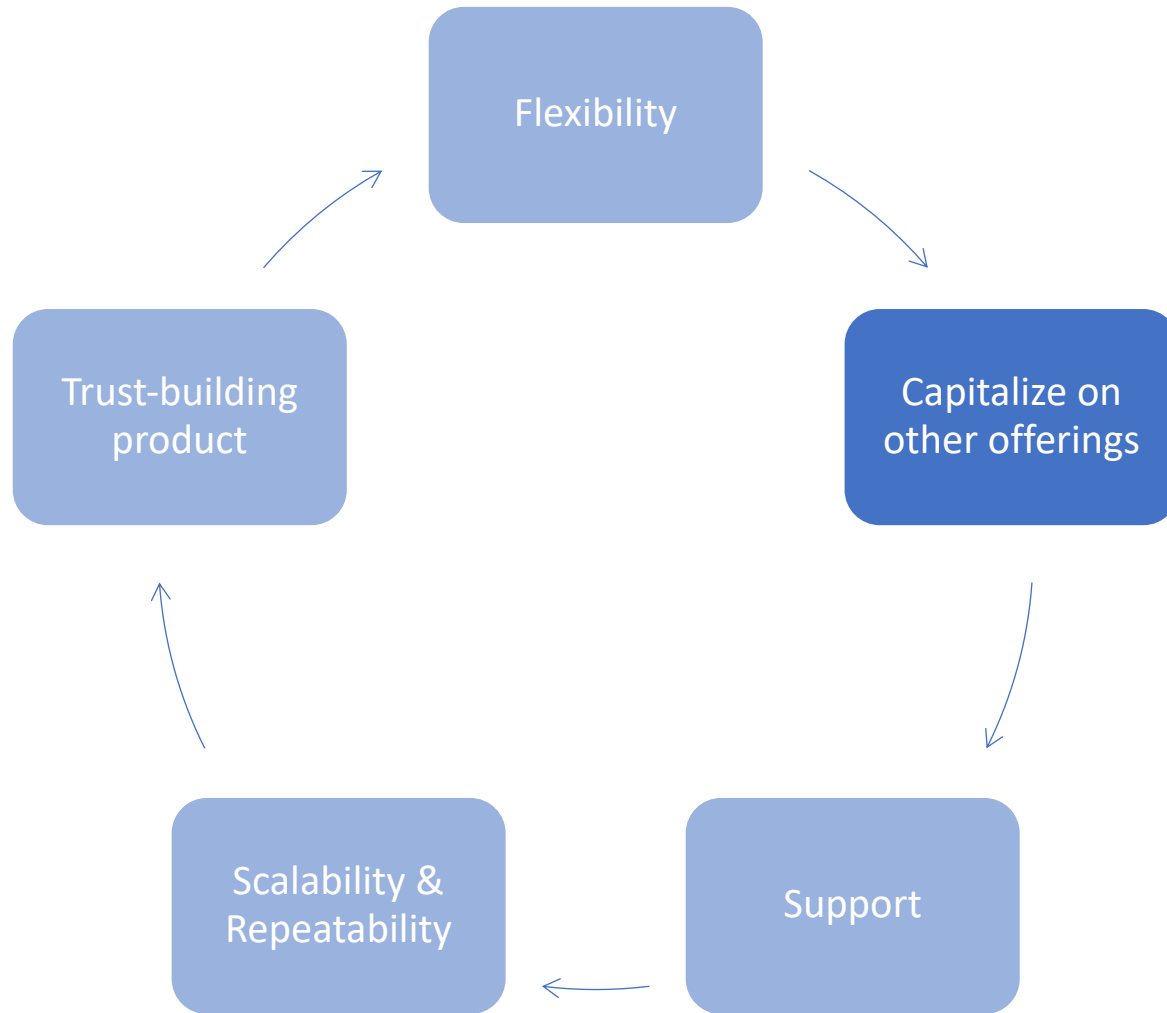
# Expanding Your Security Business



Flexible positioning, free tools and ease of product provide you with a value-add

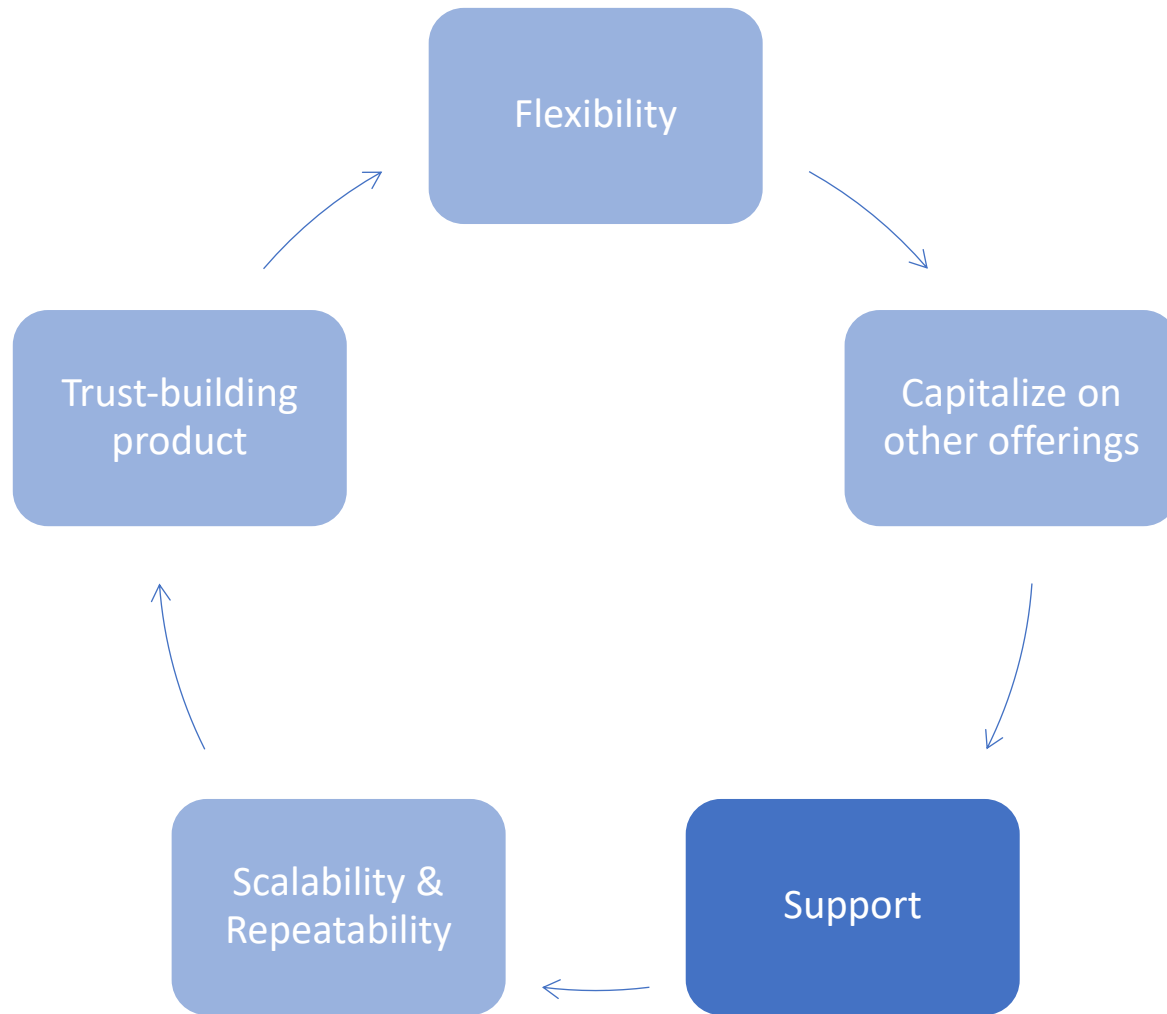


# Expanding Your Security Business



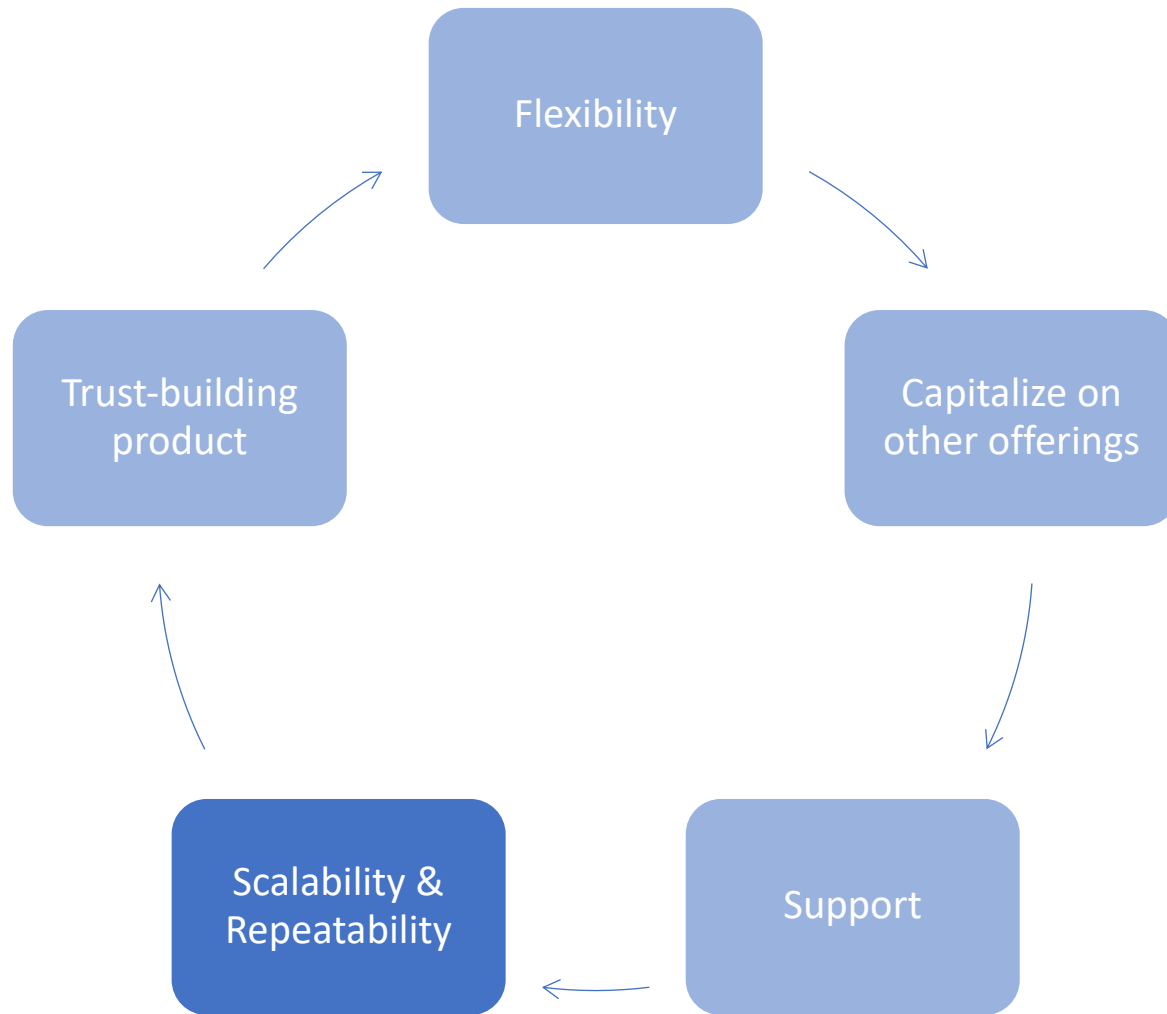
Straightforward add-on products to increase your profitability

# Expanding Your Security Business



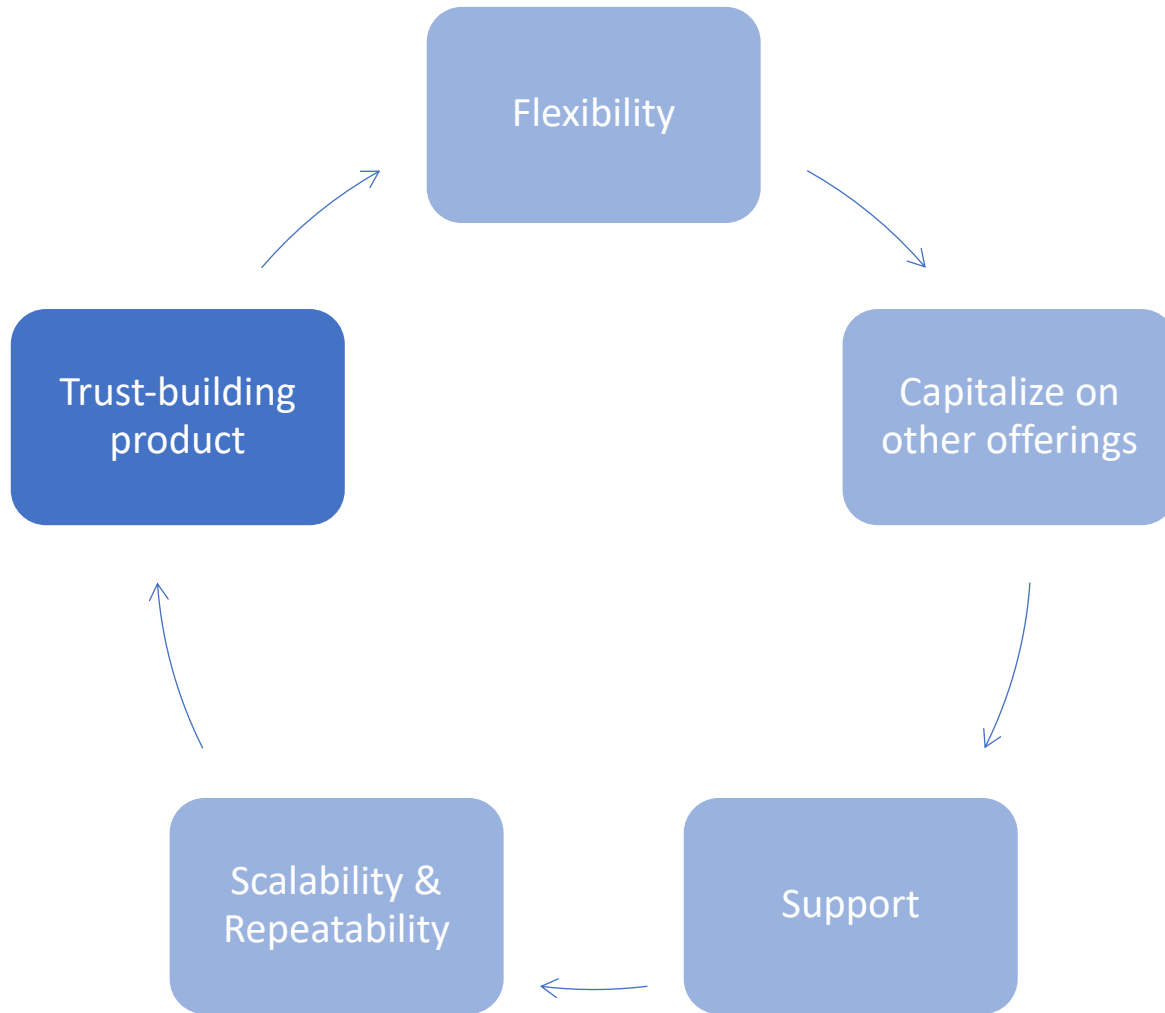
Dedicated support to help you accelerate your revenue and delight your customers!

# Expanding Your Security Business



Simple post-sale  
and onboarding to easily  
manage clients

# Expanding Your Security Business



Show immediate ROI and build trust to unlock more sales opportunities

# Expanding Your Security Business – *Hypergrowth Marketing!*

## KnowBe4 Channel Partner Collateral

Resources to help you grow your business and your customer base

### Campaigns-in-a-Box

Leverage KnowBe4 campaigns-in-a-box for content, graphics and tools to launch your campaign and generate leads\*.

**\*Note: Reach out to your Channel Account Manager for your Unique Tracking URLs. This allows leads that come through to show that you referred them.**

- Free IT Security Tools Campaign
  - Phishing Security Test
    - Campaign Content
    - Banners & HTML
  - Email Exposure Check Pro
    - Campaign Content
    - Banners & HTML
  - Password Exposure Test
    - Campaign Content
    - Banners
  - Phishing Reply Test
    - Campaign Content
    - Banners
- White Paper Campaigns
  - Ransomware Hostage Rescue Manual
    - Campaign Content
    - PDF Asset
    - Banners & HTML
  - Phishing By Industry Benchmarking Report
    - Campaign Content
    - PDF Asset
    - HTML
- Getting Started Campaign
  - Campaign Content
  - HTML

## Key Takeaways

- Security awareness training directly addresses the biggest security threat to modern organizations
- The administration of the platform is easy and does not require a senior level employee
- The ROI is extremely high, we just need to get the word out to the organizations
- Scalable security revenue stream with world-class vendor support

“It’s hugely important for ProTech to be able to share with our clients the number of employees that are clicking on a simulated phish, which translates directly to what kind of risk their business is at from a security standpoint. The fact that KnowBe4 can help us convey risk to a client makes ProTech more valuable to our clients.”

*Brian Baird Director of Security Services, ProTech Systems Group, Inc.*

The image features a tropical-themed background with palm tree silhouettes. A solid blue horizontal bar spans the middle of the image, containing the text "Thank You!".

# Thank You!

KnowBe4

KnowBe4