



PHISHING,



PHYSICAL SECURITY, and



DATA BREACHES

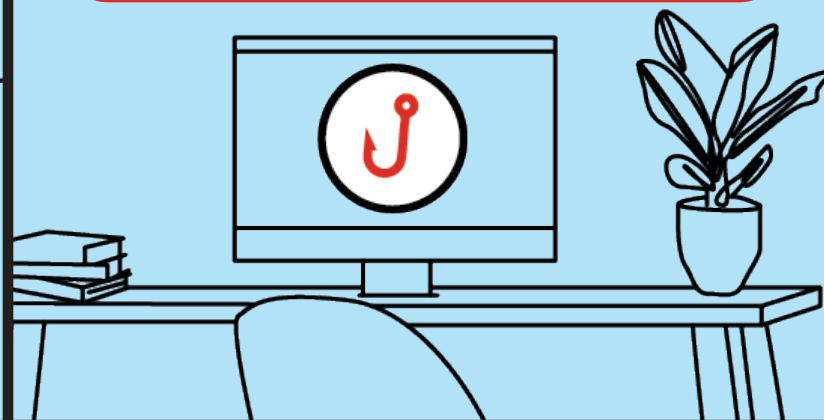
When you spot security problems, reporting them quickly helps protect everyone.

Oh My!

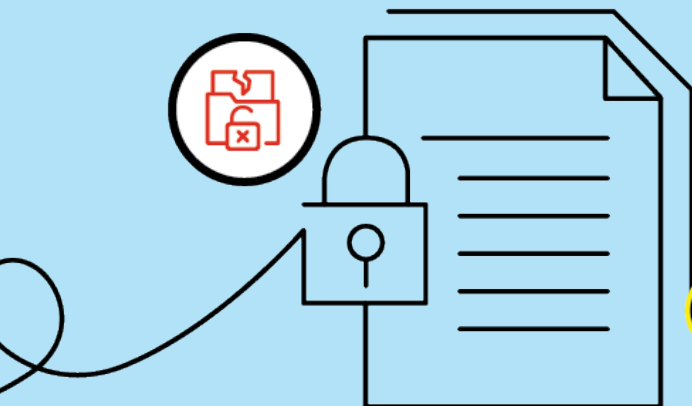


Tell your security team immediately if you notice physical security issues, such as broken locks, unauthorized visitors, or unattended sensitive documents. Don't assume someone else will report it.

If you receive a suspicious email or message that might be phishing, don't click any links! Instead, report it immediately according to your organization's policy.



If you discover a possible data breach, like finding private information where it shouldn't be, report it immediately.



Remember: quick reporting stops small problems from becoming big ones.

KnowBe4

©2025 KnowBe4, Inc. All rights reserved. | www.knowbe4.com